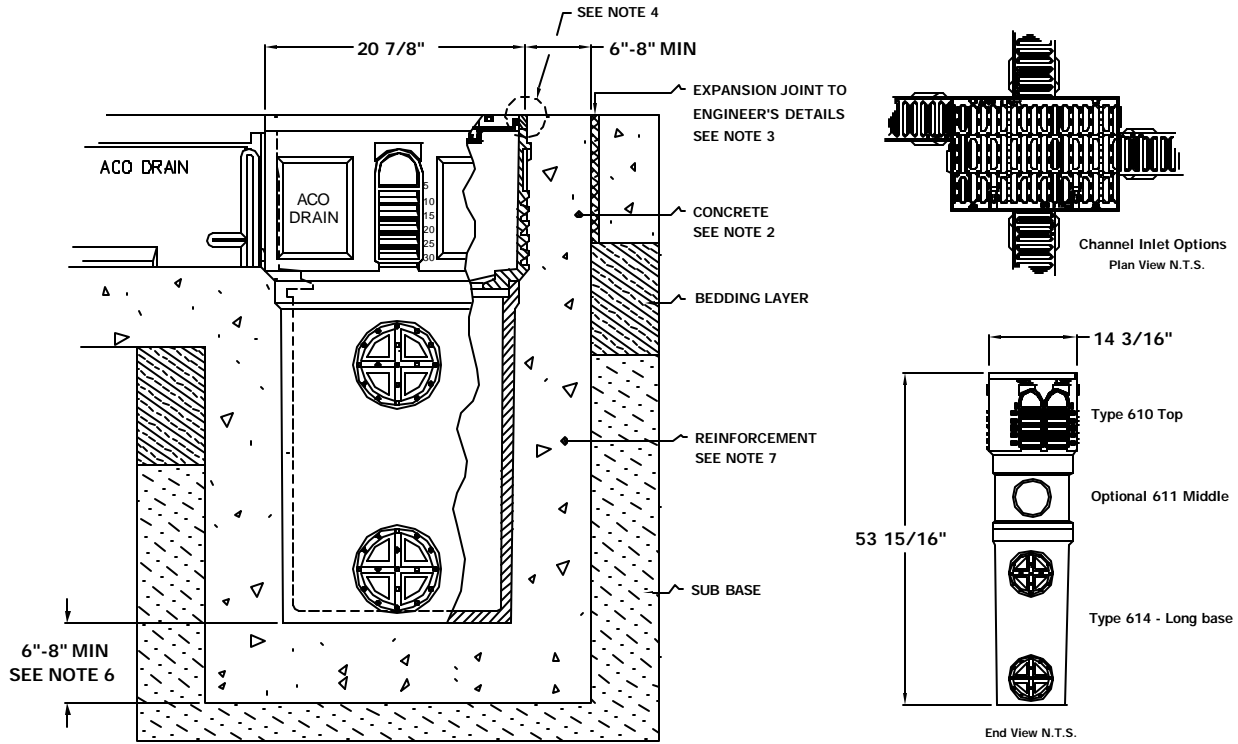


630 CB: Load Class D-F : Concrete Finish



NOTES:

1. It is necessary to ensure the minimum dimensions shown are suitable for the existing ground conditions. *Engineering advice may be required.*
2. A minimum concrete strength of 3000 PSI is recommended. The concrete should be vibrated to eliminate air pockets.
3. Expansion and crack control joints are recommended to protect the catch basin and the concrete surround. *Engineering advice may be required.*
4. The finished level of the concrete surround must be approx. 1/8" above the top of the catch basin edge.
5. Refer to ACO'S latest installation instructions for complete details.
6. Concrete base thickness should match the slab thickness.
7. Rebar or steel mesh reinforcement may be required. *Engineering advice may be required.*

630 Catch Basin System

The catch basin shall be ACO Drain 630 series made from polymer concrete with a cast-in ductile and steel rail as manufactured by ACO Polymer Products, Inc., Chardon, Oh.

The 630 series catch basin will be used in conjunction with 4" ACO DRAIN trench drain model type * _____

The 630 series catch basin - comprising of 610 top section, ductile iron PowerLok grate, 611 middle section (optional), 614 long base and trash bucket. The catch basin shall accept 4" ACO DRAIN trench drain in sides as shown above.

The catch basin shall be 19.69 in. (500mm) nominal inside length with a 11.81 in. (300mm) nominal inside width. 630 catch basin depth is 53.94 in. (1370mm)

The complete catch basin and trench drainage system shall be by ACO Polymer Products, Inc. Any deviation or partial system design and/or improper installation will void any and all warranties provided by ACO Polymer Products, Inc.

630 series catch basin shall withstand loading to Load Class F (DIN 19 580). Grate shall be ductile iron slotted and be held in place with the boltless PowerLok system. Catch basin, Trench channel and grate shall be independently certified to meet the specified DIN 19580 load class.

Polymer Concrete shall have material properties of: compressive strength range between 14,000-14,500 psi; flexural strength between 3600-4500 psi; tensile strength of 1500 psi. The material water absorption rate shall not exceed 0.1 % by weight and shall be resistant to prolonged salt exposure, repetitive frost cycles and chemically resistant to dilute acids and alkalis.

The system shall be installed in accordance with the manufacturer's instructions and recommendations.

*Fill in as required - see ACO Drain Trench spec sheets for additional info.