



INSTALLATION DRAWING

ACO Polymer Products Inc.
P.O. Box 245
Chardon, OH 44024
PH: 440-285-7000
FX: 440-285-8517
e-mail: sales@acousa.com

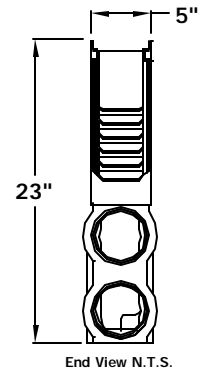
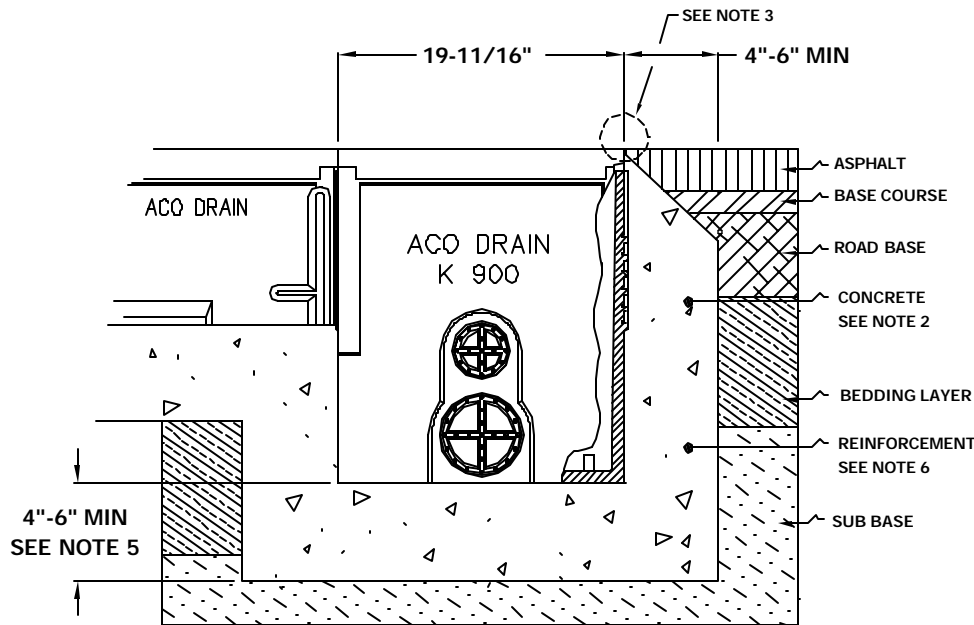
DRWG# 1665 Date: 6/18/04
WWW.ACOUSA.COM

K900 CB: Load Class A-C : Asphalt



Channel Inlet Options (Ends Only)
Plan View N.T.S.

NOTE: SEE DRWG 1664 FOR
ALTERNATE CONCRETE SURROUND



NOTES:

1. It is necessary to ensure the minimum dimensions shown are suitable for the existing ground conditions. *Engineering advice may be required.*
2. A minimum concrete strength of 3000 PSI is recommended. The concrete should be vibrated to eliminate air pockets.
3. The finished level of the asphalt surround must be approx. 1/8" above the top of the catch basin edge.
4. Refer to ACO'S latest installation instructions for complete details.
5. Concrete base thickness should match the slab thickness.
6. Rebar or steel mesh reinforcement may be required. *Engineering advice may be required.*



SPECIFICATION CLAUSE

ACO Polymer Products Inc.
P.O. Box 245
Chardon, OH 44024
PH: 440-285-7000
FX: 440-285-8517
e-mail: sales@acousa.com

DRWG# 1665 Date: 6/18/04
WWW.ACOUSA.COM

K900 Catch Basin System

The catch basin shall be ACO Drain K900 series made from polymer concrete with a stainless or galvanized steel rail cast-in as manufactured by ACO Polymer Products, Inc., Chardon, Oh.

The K900 series catch basin will be used in conjunction with 4" ACO DRAIN trench drain model type K100S and shall accept trench drain in ends as shown above.

The catch basin shall be 19.69 in. (500mm) nominal inside length with a 4 in. (100mm) nominal inside width. K900 catch basin depth is 23 in. (565mm)

The complete catch basin and trench drainage system shall be by ACO Polymer Products, Inc. Any deviation or partial system design and/or improper installation will void any and all warranties provided by ACO Polymer Products, Inc.

K900 series catch basin shall withstand loading to Load Class E (DIN 19 580). Grate shall be * _____
Catch basin, Trench channel and grate shall be independently certified to meet the specified DIN 19580 load class.

Polymer Concrete shall have material properties of: compressive strength range between 14,000-14,500 psi; flexural strength between 3600-4500 psi; tensile strength of 1500 psi. The material water absorption rate shall not exceed 0.1 % by weight and shall be resistant to prolonged salt exposure, repetitive frost cycles and chemically resistant to dilute acids and alkalis.

The system shall be installed in accordance with the manufacturer's instructions and recommendations.
*Fill in as required - see ACO Drain Trench spec sheets for additional info.