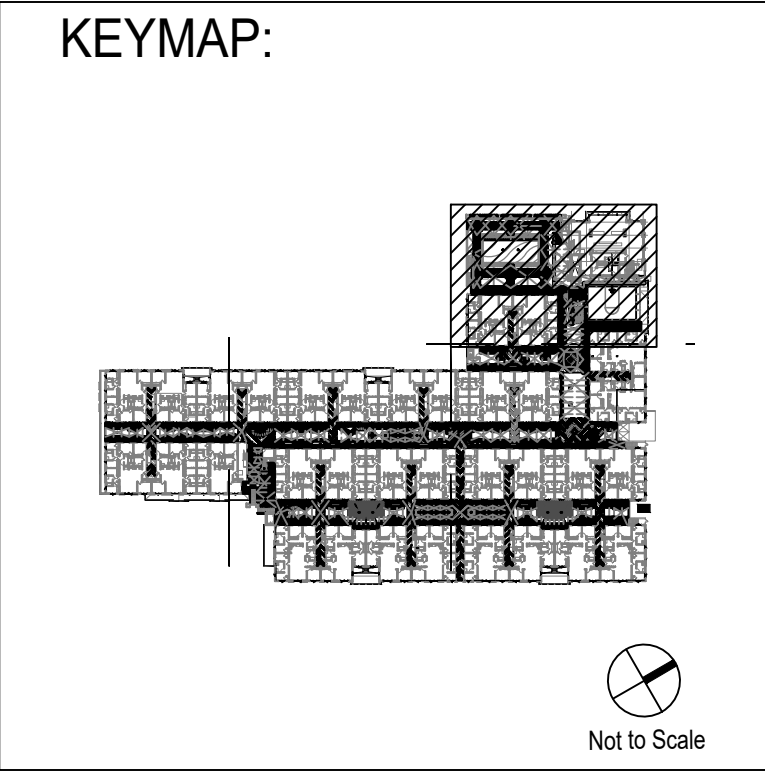
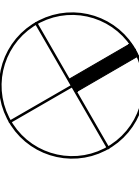


DRAINAGE LEGEND	
SYMBOL	DESCRIPTION
○	SLAB PENETRATION
⊙	PLANTER AREA DRAIN & SUBSURFACE DRAIN THROUGH SLAB
⦿	4" ROUND DECK DRAIN THROUGH SLAB, UNLESS SIZE NOTED OTHERWISE
⦿	AREA DRAIN IN AIR GAP THROUGH SLAB
⦿	5" SQUARE DECK DRAIN THROUGH SLAB, UNLESS SIZE NOTED OTHERWISE
▨	CHANNEL DRAIN
⊙	GAS LINE STUB OUT AT BBQ AND FIREPIT
→	FLOW ARROW ON PAVING OR TOPPING SLAB
→	FLOW ARROW ON GRADE
----	GRADE BREAK
----	GRADE BREAK
—	FLOW LINE
+	HIGH POINT
—	WEEP HOLES IN PLANTER WALL ABOVE TOPPING SLAB

- GRADING NOTES:
- A. REFER TO CITY AND/OR COUNTY STANDARD PLANS AND SPECIFICATIONS WHERE APPLICABLE.
- B. FOR EXISTING TOPOGRAPHY INCLUDING GRADES, UTILITIES, PROPERTY LINES, LIMITS OF ROADWAYS, CURBS AND GUTTERS, EXISTING TREES, ETC., REFER TO THE CIVIL ENGINEER'S DRAWINGS.
- C. ALL FINISHED GRADES SHALL PROVIDE FOR NATURAL RUNOFF OF WATER WITHOUT LOW SPOTS OR POCKETS. SET FLOW LINES ACCURATELY AND PROVIDE A MINIMUM 2% AND A MAXIMUM 50% GRADIENT UNLESS OTHERWISE NOTED BY CIVIL ENGINEER. CONTRACTOR SHALL BE RESPONSIBLE FOR PROVIDING "POSITIVE DRAINAGE" FOR SITE.
- D. LANDSCAPE CONTRACTOR TO RECEIVE SITE GRADED TO ±.10' BY GENERAL CONTRACTOR.
- E. ALL PROPOSED GRADES ARE TO MEET AND BLEND WITH EXISTING GRADING AT PROJECT LIMIT AND EXISTING SIDEWALKS. PRECISE ELEVATIONS INDICATED ON PLANS TO BE VERIFIED IN FIELD.
- F. HOLD FINISHED GRADES FOR SHRUB AND GROUNDCOVER AREAS 1-1/2 IN. BELOW TOP OF ADJACENT PAVEMENT, CURBS, OR HEADERS UNLESS OTHERWISE NOTED ON THE DRAWINGS. HOLD FINISHED GRADES FOR ALL SEEDED OR SODDED LAWN AREAS BELOW TOP OF ADJACENT PAVEMENTS, CURBS OR HEADERS AS FOLLOWS: SEEDED AREAS 1" BELOW AND SODDED AREAS 3/4" BELOW. HOLD FINISHED GRADES FOR SHRUB AND GROUNDCOVER AREAS IN RAISED PLANTER AREAS 2-1/2 IN. BELOW TOP OF WALL UNLESS NOTED OTHERWISE ON DETAILS.
- G. GRADUALLY ROUND OFF TOPS AND TOES OF ALL PLANTED MOUNDS TO PRODUCE A SMOOTH AND NATURAL-APPEARING TRANSITION BETWEEN RELATIVELY LEVEL AREAS AND MOUNDS. LANDSCAPE ARCHITECT TO APPROVE FINAL MOUND CONFIGURATION PRIOR TO PLANTING.
- H. INSTALL EROSION CONTROL FABRIC ON ALL SLOPES 2:1 OR GREATER AS SHOWN ON THE DRAWINGS AFTER ACCEPTANCE BY LANDSCAPE ARCHITECT OF COMPLETED FINE GRADING.
- I. CONTRACTOR TO HOLD FINISH SURFACE AT SILLS TO NO MORE THAN 1" BELOW FINISH FLOOR ELEVATION, ADJUST THICKNESS OF SLAB AS REQUIRED.
- J. WALKWAY FOR HANDICAPPED ACCESS & EGRESS TO BE 48" WIDE CLEAR WITH NO ABRUPT CHANGES IN GRADE AND NO SLOPES IN EXCESS OF 1:20 EXCEPT FOR MAIN ENTRY RAMP @ 1:12 WITH CURBS & HANDRAILS.
- K. CONTRACTOR TO INSTALL TOPPING SLAB ON WATERPROOF MEMBRANE & PROTECTION BOARD. SEE ARCHITECTURAL DETAILS FOR INSTALLATION INFORMATION ON WATERPROOFING & PROTECTION BOARD.
- L. TOPPING SLAB TO SLOPE AT 1% TO SLAB PENETRATION LOCATIONS. COORDINATE SLAB PENETRATION LOCATIONS WITH PLUMBER AND ARCHITECT. VERIFY LOCATIONS IN FIELD. TOPPING SLAB TO BE A MINIMUM OF 2 1/2" THICK.
- M. GENERAL CONTRACTOR TO COORDINATE SIZE AND LOCATION OF DECK AND AREA DRAINS FOR DRAINAGE STRUCTURES WITH LANDSCAPE CONTRACTOR & ARCHITECT. ALL GRADING AND PLACEMENT OF DRAINAGE STRUCTURES TO BE SUPERVISED IN THE FIELD BY THE GENERAL CONTRACTOR. PLANTER SURFACES TO SLOPE TO DRAINS AT A MINIMUM OF 2%. PAVED SURFACES TO SLOPE TO DRAINS AT 1% UNLESS RAMPS ARE INDICATED.
- DECK DRAIN GRATES TO BE NDS 4" ROUND BRASS, 910B UNLESS NOTED AS 9" ROUND BRASS GRATES, 930B OR 6" ROUND BRASS GRATES 918B.
 - SQUARE DECK DRAIN GRATES TO BE NDS 12" SQUARE BRASS GRATE, 1230B UNLESS NOTES AS 9" SQUARE BRASS GRATE 930B OR 6" SQUARE 921B BRASS GRATE.
 - PLANTER DRAIN GRATES IN SHRUB AREAS TO BE NDS BLACK PLASTIC 6" ATRIUM TYPE, #90.
 - ATRIUM GRATES IN AIR GAPS TO BE NDS BLACK PLASTIC 4" ATRIUM TYPE #78.
 - PLANTER DRAIN GRATES IN LAWN AREAS TO BE NDS BLACK PLASTIC 6" SQUARE FLUSH TYPE, #04.
 - SUB SURFACE DRAIN GRATES TO BE NDS BLACK PLASTIC 6" ATRIUM TYPE, #90.
 - CHANNEL DRAIN GRATES TO BE NDS MINI CHANNEL GRATE & DRAIN SYSTEM, #552B.
 - INSTALL DRAIN GRATES PER MANUFACTURER'S SPECIFICATIONS. AVAILABLE FROM NATIONAL DIVERSIFIED SALES, (800)726-1994.



PROJECT NAME
806 W. ADAMS

PROJECT NUMBER
1810133

4333 W. Champion Boulevard
Burbank, California 91502
Tel 818 500 0001 Fax 818 500 0002
Website Registration No. 001-000000

REVISIONS
A LADENDUMA-11/27/19

CHAMPION
Real Estate Company

PROJECT NUMBER
1810133

TGP

SHEET TITLE
**DRAINAGE COORDINATION PLAN -
LEVEL 2**

SHEET NUMBER
L-14.2A

PROJECT NUMBER
1810133

GMP SET - 11/27/2019