

R:\001\2020\04\18\DRAWING\SET\SET\REV-12\CONSTRUCTION\DOCS\REV-00\PP203034-PAE-12-12-2020-4-LAYOUT-C-501 UTILITY PLAN

UTILITIES:

THE FOLLOWING COMPANIES WERE NOTIFIED BY PENNSYLVANIA ONE-CALL SYSTEM (1-800-242-1776) AND REQUESTED TO MARK OUT UNDERGROUND FACILITIES AFFECTING AND SERVICING THIS SITE. THE UNDERGROUND UTILITY INFORMATION SHOWN HEREON IS BASED UPON THE UTILITY COMPANIES RESPONSE TO THIS REQUEST. SERIAL NUMBER: 20200451825

UTILITY COMPANY	PHONE NUMBER
AT & T	800-222-0400
COMCAST CABLEVISION	215-961-3800
PECO	610-943-5522
CENTURYLINK	717-245-7730
MC	800-888-0800
PHILADELPHIA CITY WATER DEPT	215-686-6300
ZAYO BANDWIDTH	610-774-5151
PHILADELPHIA DEPT OF STREETS (MAUREEN WANGARI)	215-686-5097
PHILADELPHIA GAS WORKS	215-978-3000
VEOLIA ENERGY PHILADELPHIA, INC (TRIGEN)	215-875-6000
VERIZON	215-963-6000

* DESIGNATION ON THE PLANS INTENDS TO MATCH EXISTING SPOT ELEVATIONS AND PIPE INVERTS WHICH HAVE BEEN CALCULATED/INTERPOLATED AND MUST BE FIELD VERIFIED BY THE CONTRACTOR PRIOR TO CONSTRUCTION. NOTIFY ENGINEER OF ANY DISCREPANCIES.

PRIOR TO CONSTRUCTION, CONTRACTOR TO FIELD VERIFY ALL EXISTING UTILITIES WITHIN THE LIMIT OF DISTURBANCE INCLUDING BUT NOT LIMITED TO SANITARY SEWER LINES, GAS LINES, ELECTRIC LINES, ETC. CONTRACTOR MUST NOTIFY ENGINEER OF ANY DISCREPANCIES. CONTRACTOR MUST VERIFY ALL UTILITY LATERALS SERVICING THE EXISTING BUILDINGS ON ADJACENT PROPERTIES.

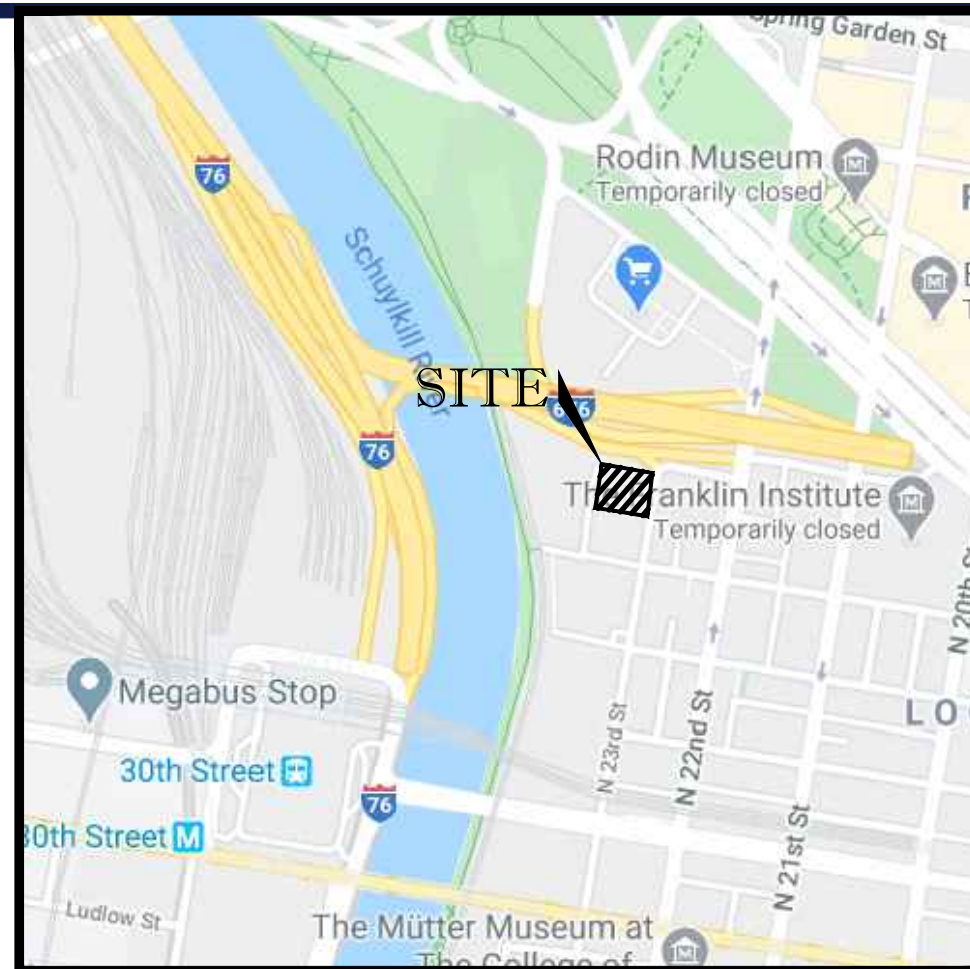
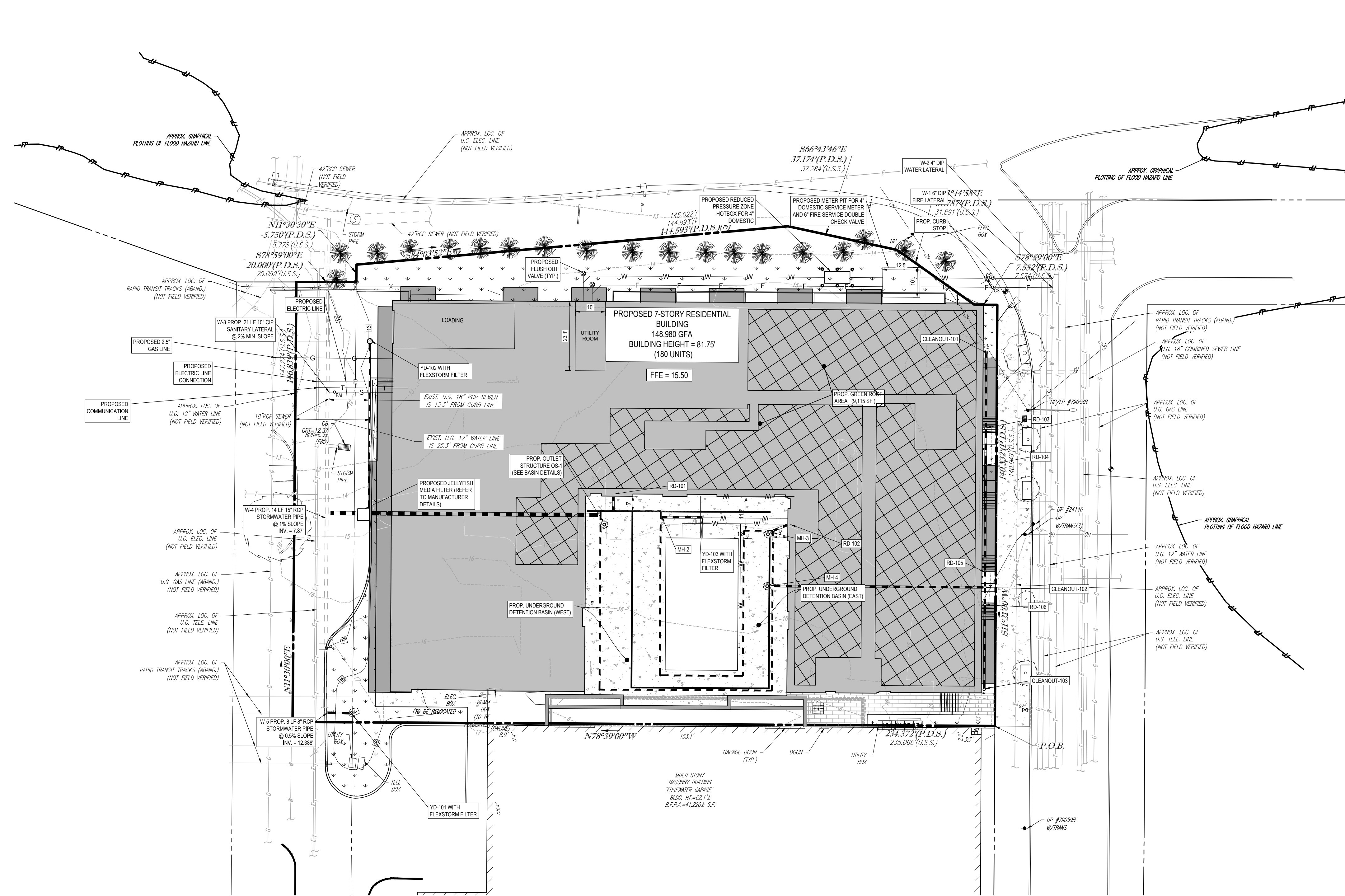
ALL EXISTING STREET LIGHTS FOR THE CITY BLOCK OF 23RD STREET FROM SUMMER STREET TO RACE STREET SHALL BE UPGRADED TO CITY STANDARD GE EVOLVE LED LUMINAIRE.

LEGEND

	EXISTING SANITARY MANHOLE
	EXISTING STORM SEWER MANHOLE
	EXISTING INLET
	EXISTING WELL
	EXISTING ROOF DRAIN
	EXISTING CLEANOUT
	EXISTING GAS VALVE
	EXISTING WATER VALVE
	EXISTING LIGHTPOLE

LINE LEGEND

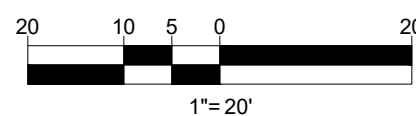
	EXISTING CONTOUR
	PROPOSED SAWCUT LINE
	EXISTING ELECTRIC LINE
	EXISTING GAS LINE
	EXISTING SANITARY SEWER
	EXISTING STORM SEWER
	EXISTING TELEPHONE LINE
	EXISTING WATER LINE
	EXISTING OVERHEAD UTILITY WIRES
	PROPOSED ELECTRIC LINE
	PROPOSED GAS LINE
	PROPOSED SANITARY SEWER
	PROPOSED STORM SEWER
	PROPOSED TELEPHONE LINE
	PROPOSED UNDERGROUND ELECTRIC & TELEPHONE LINE
	PROPOSED WATER LINE
	PROPOSED OVERHEAD UTILITY WIRES



LOCATION MAP
SCALE: 1"=100'

STORM STRUCTURE SCHEDULE				
NAME	TYPE	GRITRIM ELEV. (FT.)	INVERTS	
CLEANOUT-101	6 INCH CYLINDRICAL STRUCTURE	13.33'	INV OUT = 10.82'	
CLEANOUT-102	12 INCH CYLINDRICAL STRUCTURE	12.04'	INV IN = 10.04'	INV OUT = 10.03'
CLEANOUT-103	6 INCH CYLINDRICAL STRUCTURE	11.80'	INV OUT = 10.21'	
EX PIPE	N/A	9.37'	INV IN = 7.87'	
JELLYFISH FILTER	CUSTOM BOX	10.10'	INV IN = 10.04'	
JELLYFISH FILTER	CUSTOM BOX	9.48'	INV OUT = 7.97'	
JELLYFISH FILTER	CUSTOM BOX	9.15'	INV IN = 7.97'	
OS-1	CUSTOM BOX	10.83'	INV OUT = 9.33'	
RD-101	ROOF DRAIN	N/A	INV OUT = 9.37'	
RD-102	ROOF DRAIN	N/A	INV OUT = 9.37'	
RD-103	ROOF DRAIN	N/A	INV IN = 10.57'	INV OUT = 10.57'
RD-104	ROOF DRAIN	N/A	INV IN = 10.44'	INV OUT = 10.44'
RD-105	ROOF DRAIN	N/A	INV IN = 10.09'	INV OUT = 10.09'
RD-106	ROOF DRAIN	N/A	INV IN = 10.06'	INV OUT = 10.06'
UGB MH-2	24" MANHOLE	15.48'	INV IN = 9.33'	
UGB MH-3	24" MANHOLE	15.40'	INV IN = 9.33'	
UGB MH-4	24" MANHOLE	15.41'	INV IN = 9.33'	
YD-101	12IN NYLOPLAST DRAINAGE STRUCTURE	14.87'	INV OUT = 12.43'	
YD-102	18IN NYLOPLAST DRAINAGE STRUCTURE	13.04'	INV OUT = 8.31'	
YD-103	18IN NYLOPLAST DRAINAGE STRUCTURE	15.38'	INV OUT = 9.47'	

STORM SEWER PIPE SCHEDULE					
FROM	TO	SIZE (IN.)	TYPE	LENGTH (FT.)	SLOPE(%)
CLEANOUT-101	RD-103	8"	PVC	25	1.00%
CLEANOUT-102	UGB MH-4	8"	DIP	71	0.99%
CLEANOUT-103	RD-106	8"	PVC	28	0.50%
JELLYFISH FILTER	EX PIPE	15"	RCP	10	1.00%
OS-1	JELLYFISH FILTER	15"	DIP	77	1.76%
RD-101	UGB MH-1	8"	DIP	5	0.86%
RD-102	UGB MH-3	8"	DIP	5	0.81%
RD-103	RD-104	8"	PVC	12	1.00%
RD-104	RD-105	8"	PVC	36	1.00%
RD-105	CLEANOUT-102	8"	PVC	5	1.00%
RD-106	CLEANOUT-102	8"	PVC	6	0.50%
YD-101	EX PIPE	8"	PVC	8	16.04%
YD-102	JELLYFISH FILTER	6"	PVC	56	0.61%
YD-103	UGB MH-2	8"	PVC	14	1.00%



SITE CIVIL AND CONSULTING ENGINEERING
PROGRAM MANAGEMENT
LANDSCAPE ARCHITECTURE
SUSTAINABLE DESIGN
PERMITTING SERVICES
TRANSPORTATION SERVICES

REVISIONS				
REV	DATE	COMMENT	DRAWN BY	
1	7/30/2020	STREETS SUBMISSION	NOL	MJK
2	8/26/2020	REVISED PER PWD COMMENTS	NOL	MJK
3	9/9/2020	PER STREETS COMMENTS	NOL	MJK
4	9/30/2020	REVISED PER PWD COMMENTS	NOL	MJK
5	11/06/2020	REVISED PER PWD COMMENTS	NOL	MJK
6	12/18/2020	REVISED PER BUILDING UPDATES	NOL	MJK

PENNSYLVANIA
YOU MUST CALL 811 BEFORE ANY EXCAVATION
WHETHER IT'S ON PRIVATE OR PUBLIC LAND.
1-800-242-1776
www.pa1call.org

CONSTRUCTION SET

THIS DRAWING IS INTENDED FOR MUNICIPAL AND/OR AGENCY REVIEW AND APPROVAL. IT IS NOT INTENDED AS A CONSTRUCTION DOCUMENT UNLESS INDICATED OTHERWISE.

PROJECT No.:	PP203034
DRAWN BY:	NOL
CHECKED BY:	MJK
DATE:	7/10/2020
CAD ID:	PP203034PD-TB-0

PROJECT:

PERMITTING DOCUMENTS

FOR FEDERAL CAPITAL PARTNERS

PROPOSED RESIDENTIAL COMPLEX
230 N. 23RD STREET
8TH WARD
CITY AND COUNTY OF PHILADELPHIA, PA

1515 MARKET STREET, SUITE 920
PHILADELPHIA, PA 19102
Phone: (267) 402-3400
Fax: (267) 402-3401
www.BohlerEngineering.com

PROFESSIONAL ENGINEER
PENNSYLVANIA LICENSE No. PE075317
DELAWARE LICENSE No. 18093
NEW JERSEY LICENSE No. 240E00041400

SHEET TITLE:

UTILITY PLAN

SHEET NUMBER:

C-501

REVISION 6 - 12/18/2020