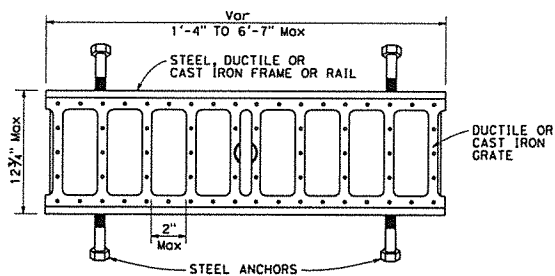
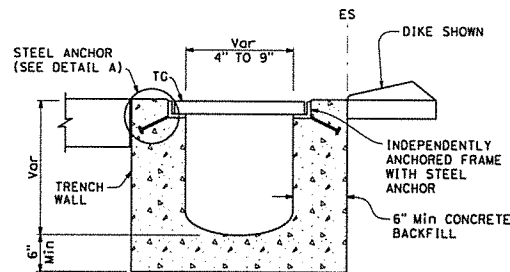


**SECTION C-C**  
(See Note 1)

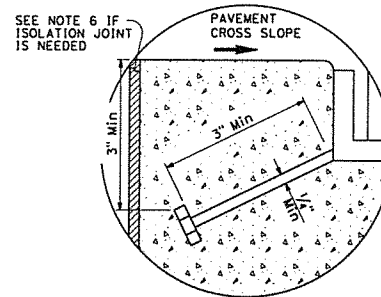


**FRAME AND GRATE DETAIL**  
(See Note 1)

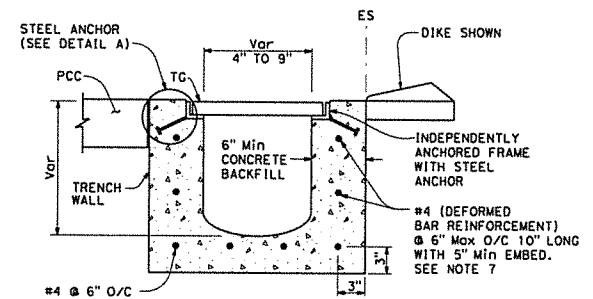


**CAST-IN-PLACE ALTERNATIVE**

**SECTION C-C**  
(See Note 1)



**DETAIL A**



**SECTION F-F**  
FOR CAST-IN-PLACE AND PRECAST INLETS  
(See Note 1)

**NOTE:**

1. See Standard Plan D98H for corresponding notes.

STATE OF CALIFORNIA  
DEPARTMENT OF TRANSPORTATION

**GRADED LINE DRAIN DETAILS No. 3**  
(ALL TYPES EXCEPT 4" NOMINAL  
WIDTH POLYMER CONCRETE)

NO SCALE

DIST	COUNTY	ROUTE	POST MILES TOTAL PROJECT	SHEET No.	TOTAL SHEETS

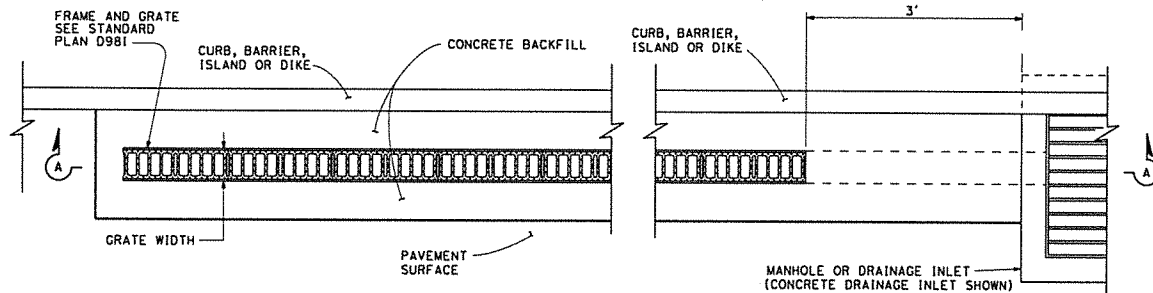
REGISTERED CIVIL ENGINEER

May 31, 2018

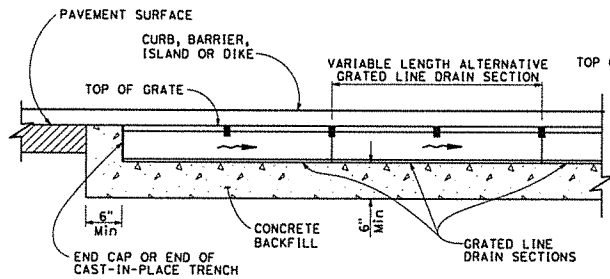
PLANS APPROVAL DATE

THE STATE OF CALIFORNIA OR ITS OFFICERS  
OR AGENTS SHALL NOT BE RESPONSIBLE FOR  
THE ACCURACY OR COMPLETENESS OF SCANNED  
COPIES OF THIS PLAN SHEET.

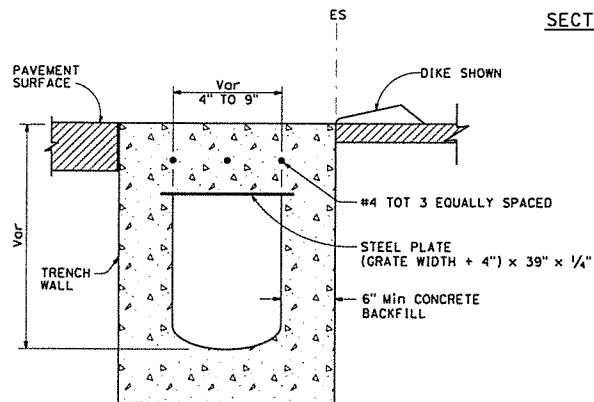
REGISTERED PROFESSIONAL ENGINEER  
Bruce D. Swanger  
No. C61257  
Exp. 6-30-19  
CIVIL  
STATE OF CALIFORNIA



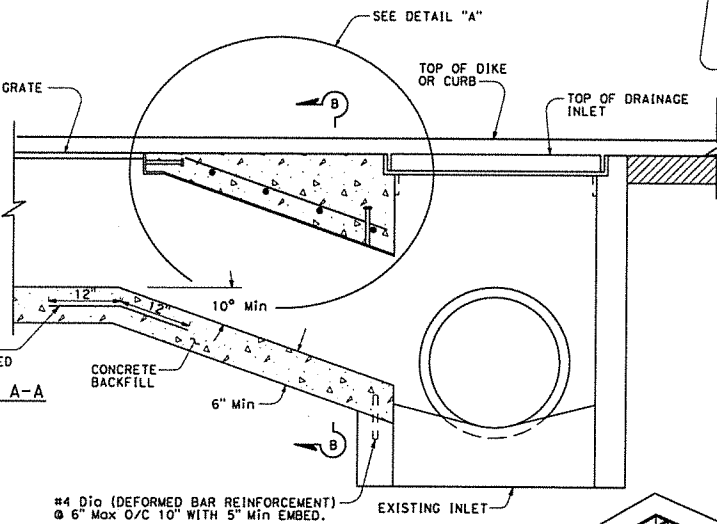
**GRADED LINE DRAIN PLAN**



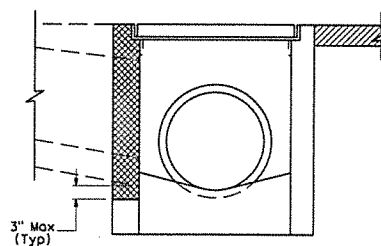
**SECTION A-A**



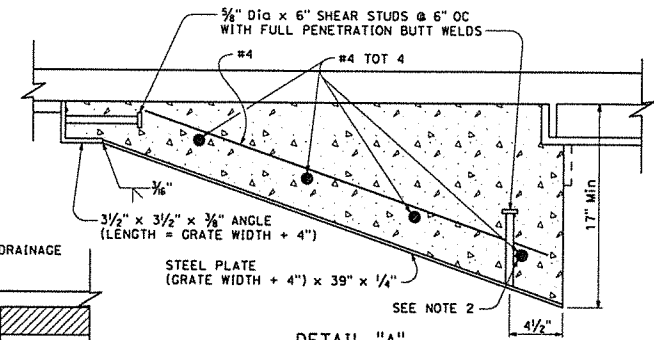
**SECTION B-B**



#4 Dia (DEFORMED BAR REINFORCEMENT) @ 6" Max O/C 10" WITH 5" MIN EMBED.

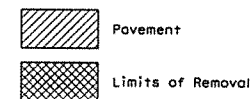


**PARTIAL REMOVAL OF EXISTING DROP INLET**



**DETAIL \"A\"**

**LEGEND:**



**NOTES:**

1. Preserve existing rebar during removal of side wall to tie to trench drain reinforcement. Install additional rebar to facilitate connection to drop inlet and replace damaged existing rebar. Doweling perpendicular to side wall in lieu of connecting to existing rebar is not permitted.
2. Drill rebar ends 3" into existing concrete, overlap and connect with double barrel mechanical coupler.

STATE OF CALIFORNIA  
DEPARTMENT OF TRANSPORTATION  
**GRADED LINE DRAIN  
DETAILS No. 4 - CONNECTION  
TO EXISTING DRAINAGE  
STRUCTURE**  
NO SCALE

**D98J**

Dist	COUNTY	ROUTE	POST MILES TOTAL PROJECT	SHEET TOTAL No. SHEETS

REGISTERED CIVIL ENGINEER  
May 31, 2018  
PLANS APPROVAL DATE  
THE STATE OF CALIFORNIA OR ITS OFFICERS  
OR AGENTS SHALL NOT BE RESPONSIBLE FOR  
THE ACCURACY OR COMPLETENESS OF SCANNED  
COPIES OF THIS PLAN SHEET.

BRUCE D. SWANER  
C61257  
Exp. 6-30-19  
CIVIL  
STATE OF CALIFORNIA

2018 STANDARD PLAN D98J